



# The Platform: Drivers, Enablers and Obstacles to our Growth – Food & Agriculture

**Ndidi Okonkwo Nwuneli, MFR**

Managing Partner, Sahel Consulting Agriculture and Nutrition Ltd.

May 1, 2019

# Overview

- Even though our country is naturally endowed to feed itself, we are facing an immense hunger and malnutrition challenge.
- Most of the obstacles and barriers are man-made and can be readily addressed with focused efforts and cohesive policies.
- We all have a critical role to play to ensure a transformation over the next four years, starting with our families, communities, the private sector, the development community, states, and the Federal Government.



# Agriculture is an important contributor to Nigeria's economy and the country is naturally endowed for agricultural excellence

Agriculture contributes the most to Nigeria's GDP

**25.1%**



**Nigeria is the Top World Producer of**

- Cassava
- Yam
- Cowpea



Agriculture employs the highest number of Nigeria's workforce.

**36.4%**

Total SHF Households:

**12** million



It has **limitless potential for employment creation**



Total Arable Land:

**84** Million Ha

Only **40%** of our Arable Land is cultivated

# The data however reveals that there is hunger and malnutrition in our land

44%

of children under 5 years have chronic, longstanding malnutrition

46%

Of children under 5 years are stunted

11%

Prevalence of undernutrition among women (15 -49 years)

25%

Prevalence of overweight/obesity (15 – 49 years)

# How has this become our reality?

1. There was **minimal investment in the sector** in the 1980s and 1990s.
2. Our **value chains are uncompetitive.**
3. We remain a **net importer of food**, even for the most critical value chains like wheat, fish, palm oil, soybean etc. with an **estimated import bill of \$2.7B** in 2018<sup>1</sup>.
4. **Nigerian Households spend the most of their income on food – about 56%<sup>2</sup>.**



# What is holding us back?

**1**  
**Insufficient allocation of resources** to agriculture.

**2**  
**Limited infrastructure** from farm to fork.

**3**  
**Overlapping mandates and activities of government agencies and parastatals** limiting the efficiency and effectiveness of government support.

**4**  
**Opaque policy environment and limited farmer impact** through government's financial interventions.

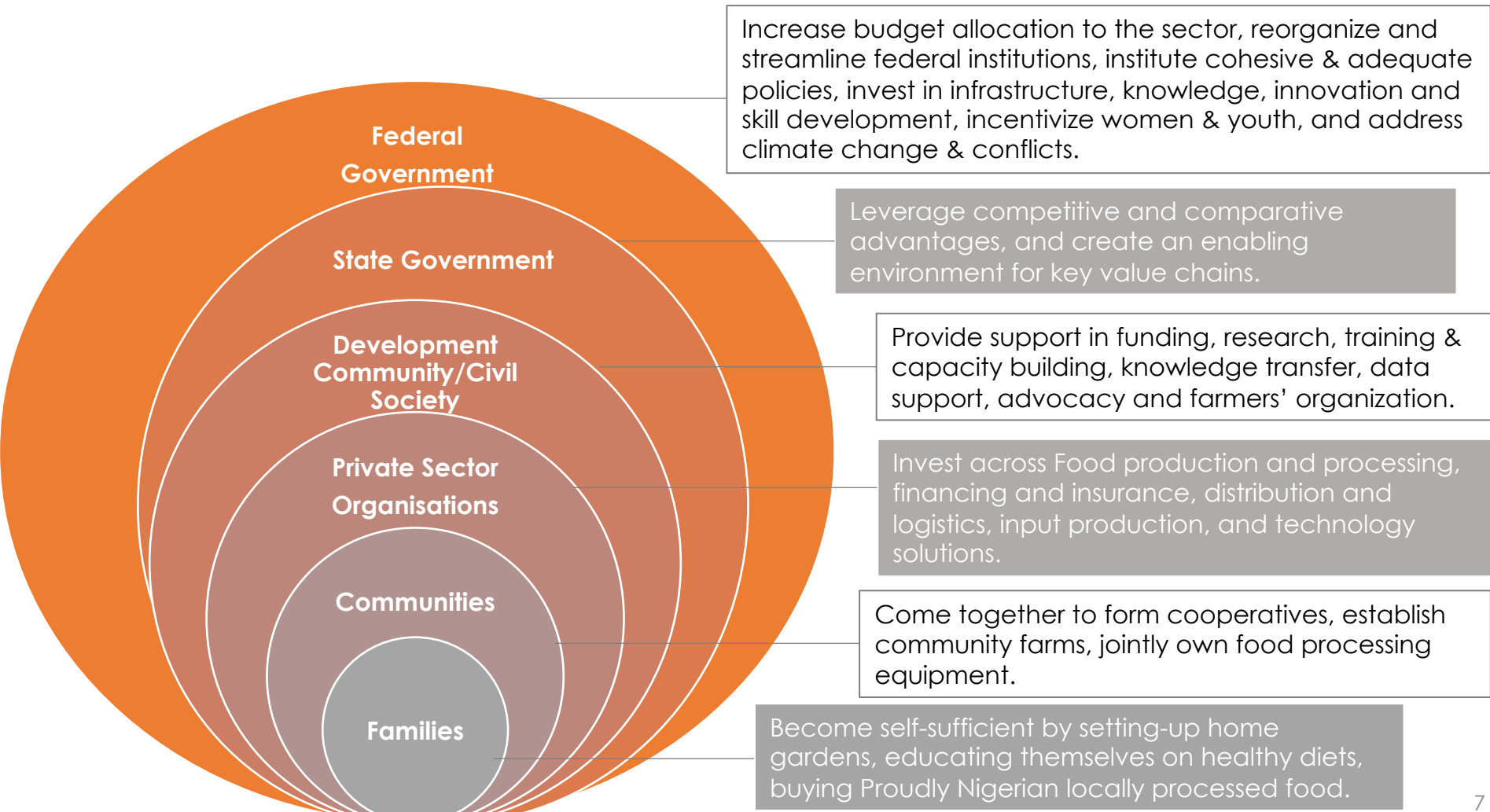
**5**  
**Limited adoption of innovation & technology.**

**6**  
**Immense challenges faced by women and youth** in the sector.

**7**  
Hampered agricultural activities and productivity driven by **Climate change shocks, insecurity and conflicts.**

# What must we do?

We all have critical roles to play in solving the problem.



# My Personal Efforts in the Agriculture and Nutrition Sectors



Established in 2010, Sahel Consulting Agriculture and Nutrition Limited is committed to unlocking Africa's agriculture and nutrition potential. We currently operate from Nigeria and work across West Africa.

[www.sahelcp.com/sahel-consulting/](http://www.sahelcp.com/sahel-consulting/)



AACE Foods is an indigenous Nigerian company established in November 2009. We process, package and distribute nutritious and tasty food made from the best of West Africa's fruits, herbs, vegetables and cereals. Our product line consists of spices, spreads, sauces and complementary food that excite and satisfy institutional, commercial and retail customers.

[www.aacefoods.com](http://www.aacefoods.com)



Sahel Capital Agribusiness Managers Limited is a leading private equity firm focused exclusively on the Nigerian agribusiness sector – managing the Fund for Agricultural Financing in Nigeria (FAFIN). We adopt an integrated approach to deliver tailored capital solutions that meet the unique needs of companies and our investment partners.

[www.sahelcp.com/sahel-agribusiness/](http://www.sahelcp.com/sahel-agribusiness/)

*“The eradication of hunger is not just an end in itself: It is a first step toward sustainable development and progress in general, for **a hungry man is not a free man. He cannot focus on anything else but securing his next meal.**”*

*Kofi Annan*

# THANK YOU



**oonyirioha@sahelcp.com**



[www.sahelcp.com](http://www.sahelcp.com)



[sahelconsulting](#)



**Services**

[www.sahelcp.com/sahel-consulting/#Services](http://www.sahelcp.com/sahel-consulting/#Services)



**Research**

[www.sahelcp.com/category/research/](http://www.sahelcp.com/category/research/)



**Newsletters**

[www.sahelcp.com/category/newsletters/](http://www.sahelcp.com/category/newsletters/)